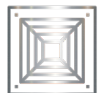


Direct Expansion Air Handler

FLOW MARINE FEATURES



TITANIUM
CONDENSERS



STAINLESS STEEL
CHASSIS



OVERSIZED
PIPING



COPPER ON COPPER
EVAPORATOR
COILS



HIGH-VELOCITY
BLOWERS



NON-PROPRIETARY
PARTS

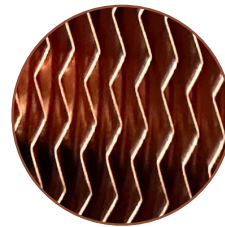
OPTIONS AVAILABLE: 410A & 407C & CUSTOMIZABLE



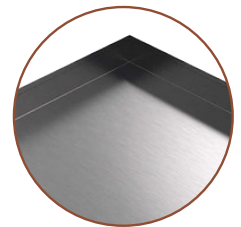
Oversized Stainless
Steel Drain Line



Extra Copper Lines
for High Efficiency



Copper Fins



Corrosion Resistant
Stainless Chassis
& Drain Pan



Direct Expansion Air Handlers: Specification Table

Direct Expansion Air Handlers Model	FMA007	FMA010	FMA012	FMA016	FMA018	FMA024
Capacity BTU/h	7,000	10,000	12,000	16,000	18,000	24,000
Voltage	115v - 230v	115v - 230v	115v - 230v	115v - 230v	115v - 230v	115v - 230v
Hertz/Phase	50/60	50/60	50/60	50/60	50/60	50/60
Max Current (A)	2A	2A	2.5A	2.5A	2.5A	3.5A
Min. Fuse (A)	3A	3A	3.5A	3.5A	3.5A	4.5A
Max. Fuse (A)	5A	5A	5.5A	5.5A	5.5A	6.5A
Refrigerant Type	R-407C / R-410A	R-407C / R-410A	R-407C / R-410A	R-407C / R-410A	R-407C / R-410A	R-407C / R-410A
Height	11 3/8" - 289mm	11 3/8" - 289mm	13 1/4" - 336mm	13 1/2" - 343mm	13 1/2" - 343mm	15 1/8" - 384mm
Width	12 1/2" - 317mm	12 1/2" - 317mm	12 1/2" - 317mm	13 7/8" - 352mm	13 7/8" - 352mm	17" - 432mm
Depth	12" - 305mm	12" - 305mm	14" - 356mm	14" - 356mm	14" - 356mm	14" - 356mm
Discharge Line	1/4" - 7mm	1/4" - 7mm	1/4" - 7mm	1/4" - 7mm	1/4" - 7mm	3/8" - 10mm
Suction Line	3/8" - 10mm	3/8" - 10mm	3/8" - 10mm	1/2" - 13mm	1/2" - 13mm	5/8" - 16mm
Net Weight lbs/kg	18lbs - 8kg	21lbs - 10kg	26lbs - 12kg	32bs - 15kg	32bs - 15kg	39bs - 18kg

Dimensions

Height (A)
Width (B)
Depth (C)

