

Direct Expansion Condenser

FLOW MARINE FEATURES



TITANIUM
CONDENSERS



STAINLESS STEEL
CHASSIS



OVERSIZED
PIPING



COPPER ON COPPER
EVAPORATOR
COILS



HIGH-VELOCITY
BLOWERS

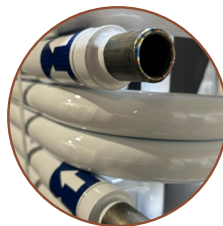


NON-PROPRIETARY
PARTS

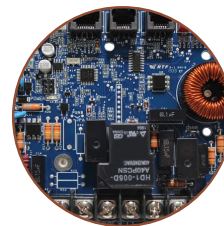
OPTIONS AVAILABLE: 410A & 407C & CUSTOMIZABLE



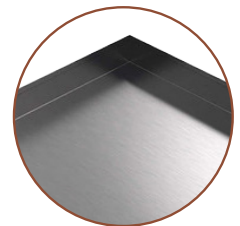
Oversized Stainless
Steel Drain Line



Full Flow
Condenser



Unity Control
Board



Corrosion Resistant
Stainless Chassis
& Drain Pan



Direct Expansion Condenser: Specification Table

DX Condensers Model	FMD007	FMD010	FMD012	FMD016	FMD024	FMD030	FMD036	FMD038
Capacity BTU/h	7,000	10,000	12,000	16,000	24,000	30,000	36,000	48,000
Voltage	115v or 230v	115v or 230v	115v or 230v	115v or 230v	115v or 230v	115v or 230v	115v or 230v	115v or 230v
Hertz/Phase	60Hz/1Ph or 50Hz/1Ph	60Hz/1Ph or 50Hz/1Ph	60Hz/1Ph or 50Hz/1Ph	60Hz/1Ph or 50Hz/1Ph	60Hz/1Ph or 50Hz/1Ph	60Hz/1Ph or 50Hz/1Ph	60Hz-1Ph or 3Ph 50Hz-1Ph or 3Ph	60Hz-1Ph or 3Ph 50Hz-1Ph or 3Ph
Max Current (A)	6.1A - 3A	7.7A - 4.4A	9A - 4.7A	10.1A - 5.6A	15A	12.3A	13A - 14.7A - 6.6A	15.2A - 24A - 15A
LRA (A)	29A - 15A	50A - 20A	50A - 25A	57A - 29A	63A	79A	75A - 88A - 44A	83A - 137A - 76A
Power Input (W)	677 W - 665 W	843 W - 837 W	1015 W - 995 W	1109 W - 1222 W	2385 W	2885 W	3,350	4,020
Min. Fuse (A)	9A - 6A	10A - 7A	12A - 8A	13A - 8A	18A	15A	16A - 18A - 8A	18A - 26A - 18A
Max. Fuse (A)	14A - 11A	15A - 12A	17A -13A	18A - 13A	23A	20A	21A - 23A - 12A	23A - 30A - 22A
Refrigerant Type	R-407C / R-410A	R-407C / R-410A	R-407C / R-410A	R-407C / R-410A	R-407C / R-410A	R-407C / R-410A	R-407C / R-410A	R-407C / R-410A
Height	12 1/2" - 317mm	12 1/2" - 317mm	12 1/2" - 317mm	13 3/8" - 340mm	16" - 406mm	18" - 457mm	18" - 457mm	19 1/2" - 495mm
Width	12" - 305mm	12" - 305mm	12" - 305mm	12" - 305mm	15 1/2" - 394mm	15 1/2" - 394mm	15 1/2" - 394mm	15 1/2" - 394mm
Depth	14 3/4" - 375mm	14 3/4" - 375mm	15 1/4" - 387mm	15 1/4" - 387mm	19 1/4" - 489mm	19 1/4" - 489mm	19 1/4" - 489mm	19 1/4" - 489mm
Seawater Connection	5/8" - 16mm	5/8" - 16mm	5/8" - 16mm	5/8" - 16mm	5/8" - 16mm	5/8" - 16mm	5/8" - 16mm	5/8" - 16mm
Discharge Line	1/4" - 7mm	1/4" - 7mm	1/4" - 7mm	1/4" - 7mm	3/8" - 10mm	3/8" - 10mm	3/8" - 10mm	3/8" - 10mm
Suction Line	3/8" - 10mm	3/8" - 10mm	3/8" - 10mm	3/8" - 10mm	1/2" - 13mm	3/4" - 20mm	3/4" - 20mm	3/4" - 20mm
Net Weight Lbs/KG	36.15lbs - 16.39kg	45.7lbs - 20.72kg	44.8lbs - 20.32kg	45.10lbs - 20.35kg	89.4lbs - 40.55kg	94lbs - 42.63kg	101.6lbs - 46.1kg	125lbs - 57kg

Dimensions

- Height (A)
- Width (B)
- Depth (C)

