

FLOW MARINE
FEATURES



TITANIUM
CONDENSERS



STAINLESS STEEL
CHASSIS



OVERSIZED
PIPING



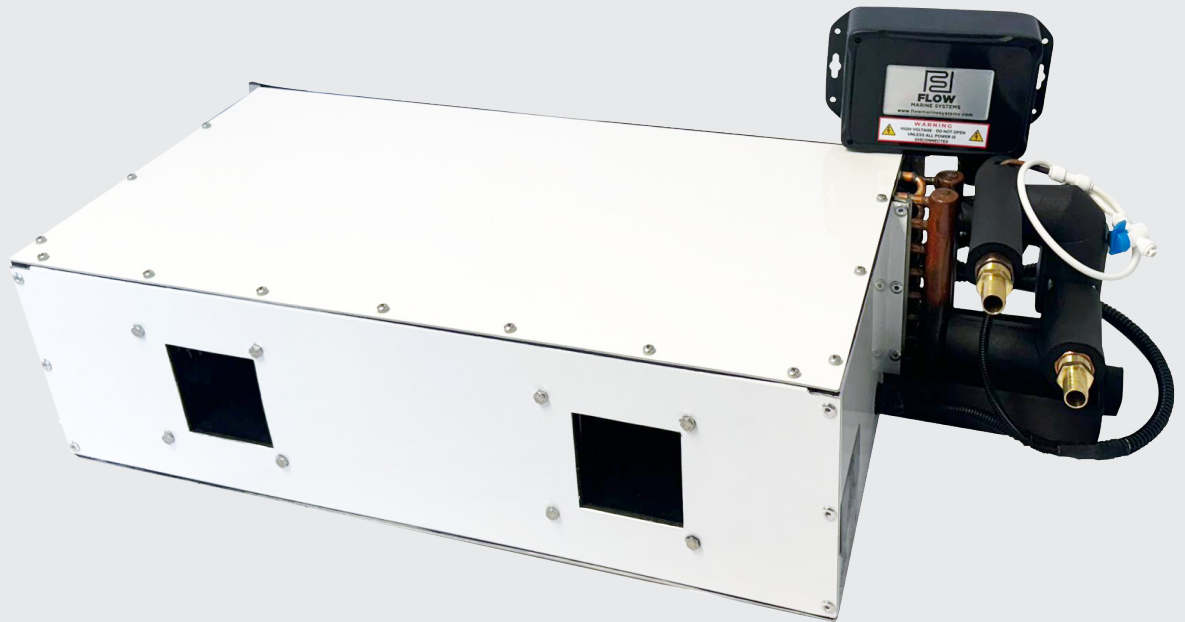
COPPER ON COPPER
EVAPORATOR
COILS



HIGH-VELOCITY
BLOWERS



NON-PROPRIETARY
PARTS



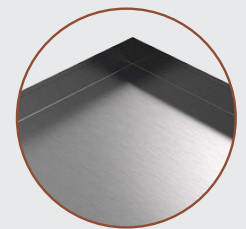
Oversized
Stainless Steel
Drain Line



Extra Copper Lines
for High Efficiency



Copper Fins



Corrosion Resistant
Stainless Chassis
& Drain Pan



Horizontal Chilled Water Air Handler: Specification Table

Horizontal Chilled Water Air Handlers Model	FMZ007H	FMZ012H	FMZ018H	FMZ024H	FMZ036H
Capacity BTU/h	7,000	12,000	18,000	24,000	36,000
Voltage	230v 1Ph	230v 1Ph	230v 1Ph	230v 1Ph	230v 1Ph
Max Current (A)	2A	2.5A	4A	4A	5A
Min. Fuse (A)	3A	3.5A	5A	5A	7A
Max. Fuse (A)	5A	5A	5.5A	5.5A	5.5A
Optional Electric Heater(A)	4.2A (1,000W)	4.2A (1,000W)	4.2A (1,000W)	8.4A (2,000W)	8.4A (2,000W)
Min. Fuse (A) W/ Heater	7A	7A	7A	12A	12A
Max. Fuse (A) W/ Heater	10A	10A	10A </td <td>15A</td> <td>15A</td>	15A	15A
Height	6 1/2" - 165mm	8 1/2" - 216mm	8 1/2" - 216mm	8 1/2" - 216mm	8 1/2" - 216mm
Width	20 1/2" - 521mm	20 1/2" - 521mm	31 1/2" - 800mm	41 1/2" - 1054mm	51 1/2" - 1308mm
Depth	13 1/4" - 337mm	13 3/4" - 350mm	13 3/4" - 350mm	15 3/4" - 400mm	16 3/4" - 462mm
Chilled Water Connections	1/2"	1/2"	3/4"	3/4"	3/4"

Dimensions

Width (A)
Height (B)
Depth (C)

